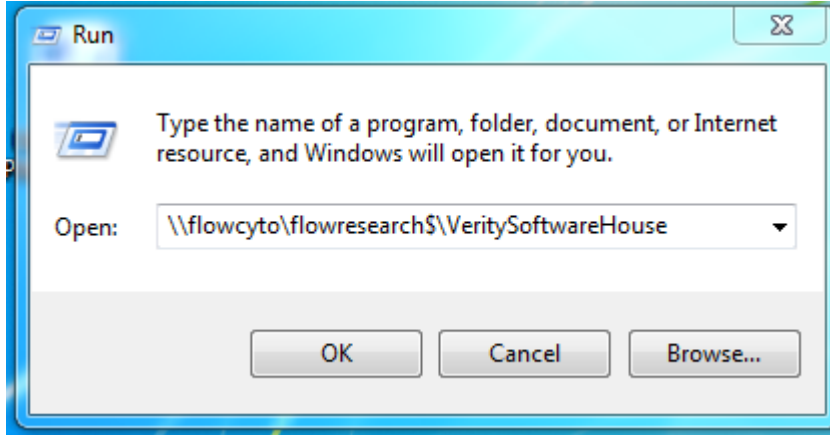


# Instructions for Accessing Network Version ModFit DNA analysis software from your Roswell computer

(reusable user license network share for Flow Cytometric DNA analysis)

Click on "START" lower left of your desktop

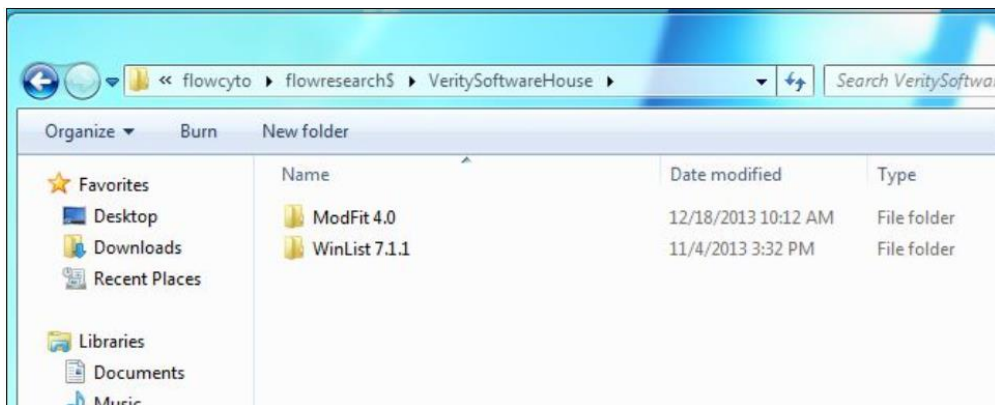
In the box displayed after selecting Run, type [\\flowcyto\flowresearch\\$\VeritySoftwareHouse](\\flowcyto\flowresearch$\VeritySoftwareHouse) and select "OK".



**Note: You must be a member of this folder group to gain access.**

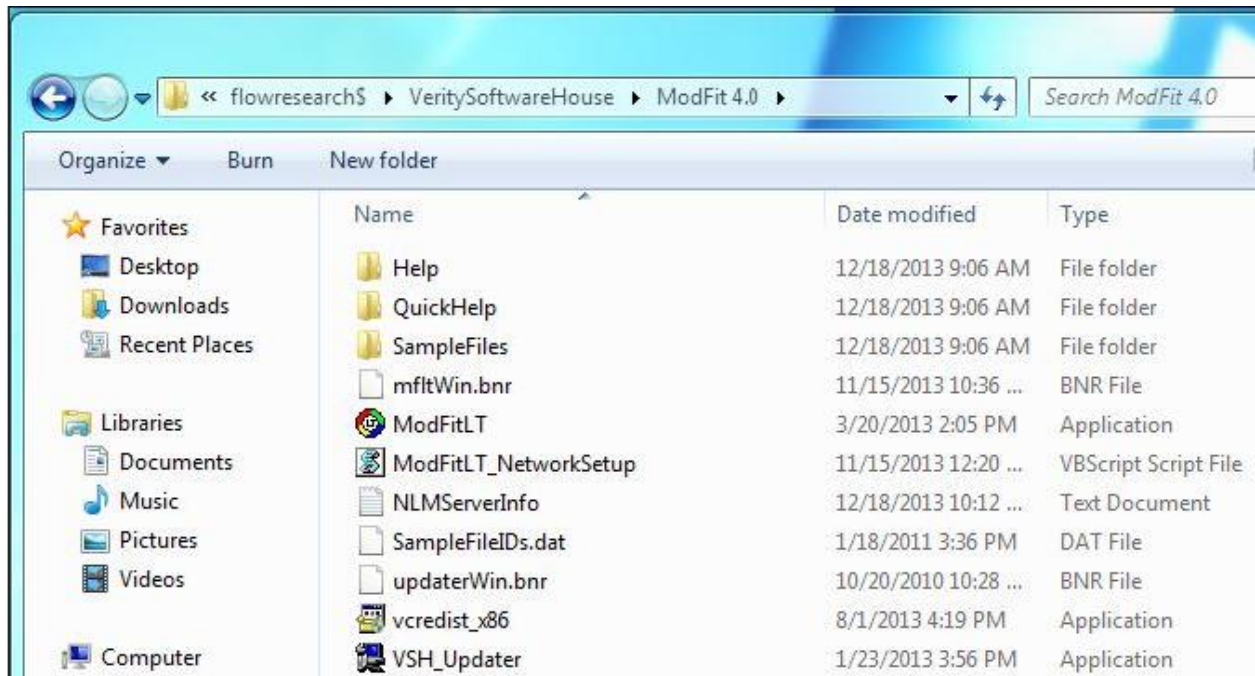
Please E-mail [ed.podniesinski@roswellpark.org](mailto:ed.podniesinski@roswellpark.org) to be added to the group.

This is the shared folder location where ModFitLT\_NetworkSetup resides.



Open ModFit 4.0 folder by double clicking on it:

Here's what you should see:



Right click on ModFitLT.exe and within the popup menu, select "Send to" Desktop (Create Shortcut).

This will create a shortcut on your Desktop. You may want to rename it to ModFit 4.0 Network.

*Alternately, you can use the ModFitLT\_NetworkSetup script file to do it automatically but this requires temporary Admin rights and only needs to be run once. Usually, using the first set of instructions in creating the Desktop shortcut works sufficiently without obtaining Temp Admin rights.*